



 ICC Kyoto  
Food and Beverage

## Party (Buffet)

JPY 6,600~

## Dinner (Course Menu)

JPY 8,800~

## Hors d'oeuvre (finger food)

JPY 4,400~

## Food Stands

◆Sushi JPY 1,650

◆Tempura JPY 1,650

◆Nishin Soba (soba noodle soup with Herring) JPY 990

◆5types of kushikatsu JPY 1,650

◆Beef Steak JPY 1,980

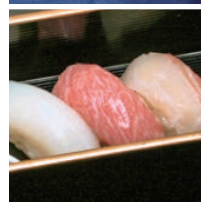
◆Roast Beef JPY 1,980

Available for 80 or more orders

## Lunch

◆Buffet JPY 3,300~

◆Course Menu JPY 4,400~



Sushi



Tempura



## Drink

### Free Drinks 2 hours

#### ◆Deluxe plan JPY 3,300

Beer, wine (red/white), whiskey, Japanese sake, shochu (made from sweet potato/barley), cocktails\*, soft drinks (orange juice/apple juice/oolong tea)

\*Gin & tonic, Campari & soda, Campari & orange, Cassis & soda, Cassis & orange

#### ◆Standard plan JPY 2,750

Beer, wine (red/white), whiskey, shochu (made from sweet potato/barley), soft drinks (orange juice/apple juice/oolong tea)

• Beer (500ml)	JPY 935	• Cocktails (glass)*	JPY 770
• Wine (750ml)	JPY 4,620	• Non-alcoholic beer (334ml)	JPY 550
• Japanese sake (280ml)	JPY 1,100	• Juice (glass)	JPY 550
• Whiskey (glass)	JPY 770	• Oolong tea (glass)	JPY 550
• Shochu (Distilled spirits)	JPY 660		

\*Gin & tonic, Campari & soda, Campari & orange, Cassis & soda, Cassis & orange

### Drink option

• Japanese sparkling sake (300ml)	JPY 1,320	• Craft beer (330ml)	JPY 1,320~
• Sparkling wine (750ml)	JPY 4,620~	• Local sake (720ml)	JPY 3,300~

## Boxed Lunch

- ◆ Traditional Japanese Boxed Lunch  
JPY 2,200 / JPY 3,300 / JPY 5,500
- ◆ Boxed Lunch with green tea  
JPY 1,650 / JPY 1,980 / JPY 2,200



Traditional Japanese Boxed Lunch

## Bread

- ◆ Boxed Sandwich (with fruit juice)  
JPY 1,430 / JPY 1,650
- ◆ Sandwich  
JPY 1,320
- ◆ Danish Pastry  
JPY 275~ / piece



Boxed Lunch with green tea

## Refreshment

- ◆ Chocolate assortment JPY 660 / approx. 8 pieces
- ◆ Cookie assortment JPY 660 / approx. 8 pieces
- ◆ Baked sweets JPY 330 / piece
- ◆ Candy assortment JPY 550 / approx. 10 pieces



- ◆ Deluxe plan (Kyoto confectionery)  
JPY 990 / person

- ◆ Standard plan (Kyoto confectionery)  
JPY 550 / person

Drinks JPY 300 / disposable cup JPY 500 / china cup / glass  
Coffee/Tea/Iced coffee/Iced tea/Orange juice/Apple juice/Oolong tea

Available for 10 or more orders



## Catered service

- ◆ Coffee/Tea (hot/iced) (china cup/glass) JPY 550
- ◆ Juice (glass) JPY 550
- ◆ Oolong tea (glass) JPY 550
- ◆ Mineral water (400ml Bottle) (glass) JPY 330

## Self service

- ◆ [Pot] Hot coffee/tea (15 cups)..... china cup JPY 7,150 disposable cup JPY 4,400
- ◆ [Pitcher] Iced coffee/tea (10 cups)..... glass JPY 4,840 disposable cup JPY 2,970
- ◆ [Pitcher] Juice/Oolong tea (10 cups)..... glass JPY 4,840 disposable cup JPY 2,970
- ◆ Mineral water (400ml Bottle)..... glass JPY 242
- ◆ Water tank (approx. 100 cups)..... disposable cup JPY 2,750
- ◆ Tea tank (approx. 100 cups)..... disposable cup JPY 3,520

Our hot coffee is  
Fairtrade certified.



## Decoration / Production

Ornament Flower	table/JPY 3,300~ food table/JPY 33,000~
Equipment fee (2Microphones, Stage light,BGM)	Swan/JPY 27,500~ Sakura/JPY 33,000~
Stage (240×120×30cm H)	JPY 2,640
(240×180×60cm H)	JPY 4,400
Gold Folding Screen (2.4mH)	JPY 8,800
(2.1mH)	JPY 6,600



---

### Attractions

- Traditional Kyoto dance
  - Japanese drum performance
  - Koto (Japanese harp)
  - Shamisen performance, others.
- ※Please feel free to contact us.

※Tax included ※Images are for reference only



ICC Kyoto Catering Service, Sales Promotion Department

E-mail: icckcs-eigyo@kich-d.co.jp